



COMPANY

PROFILE

“

*Turning Zimbabwe's Housing Projects
Into Power Station.*

”



At TES, we are pioneering Africa's transition to sustainable luxury living through solar-integrated architecture. Our flagship product — Heliu™ solar roof tiles — redefines what a roof can be: a source of power, elegance, and architectural brilliance.

This is our corporate prophecy, a future where every structure contributes to a resilient, self-sustaining, and electrified Zimbabwe. This isn't just a business; it's a movement underway.

Our

Philosophy



Vision

Our Vision: To redefine the standard of modern living in Zimbabwe, where sustainable energy is not an afterthought, but an integral, beautiful, and essential part of every home.



Our Mission: To deliver innovative, integrated solar roofing systems that provide lasting energy independence, exceptional aesthetic value, and a tangible return on investment for every client.

Mission





Problem & Solution

In Zimbabwe, energy is often treated as an afterthought — added late, inefficiently, or at high cost. Traditional solar solutions are bulky, unattractive, and disconnected from modern architecture. What's missing is a sustainable, integrated approach that sees energy not just as a utility — but as a lifestyle foundation.

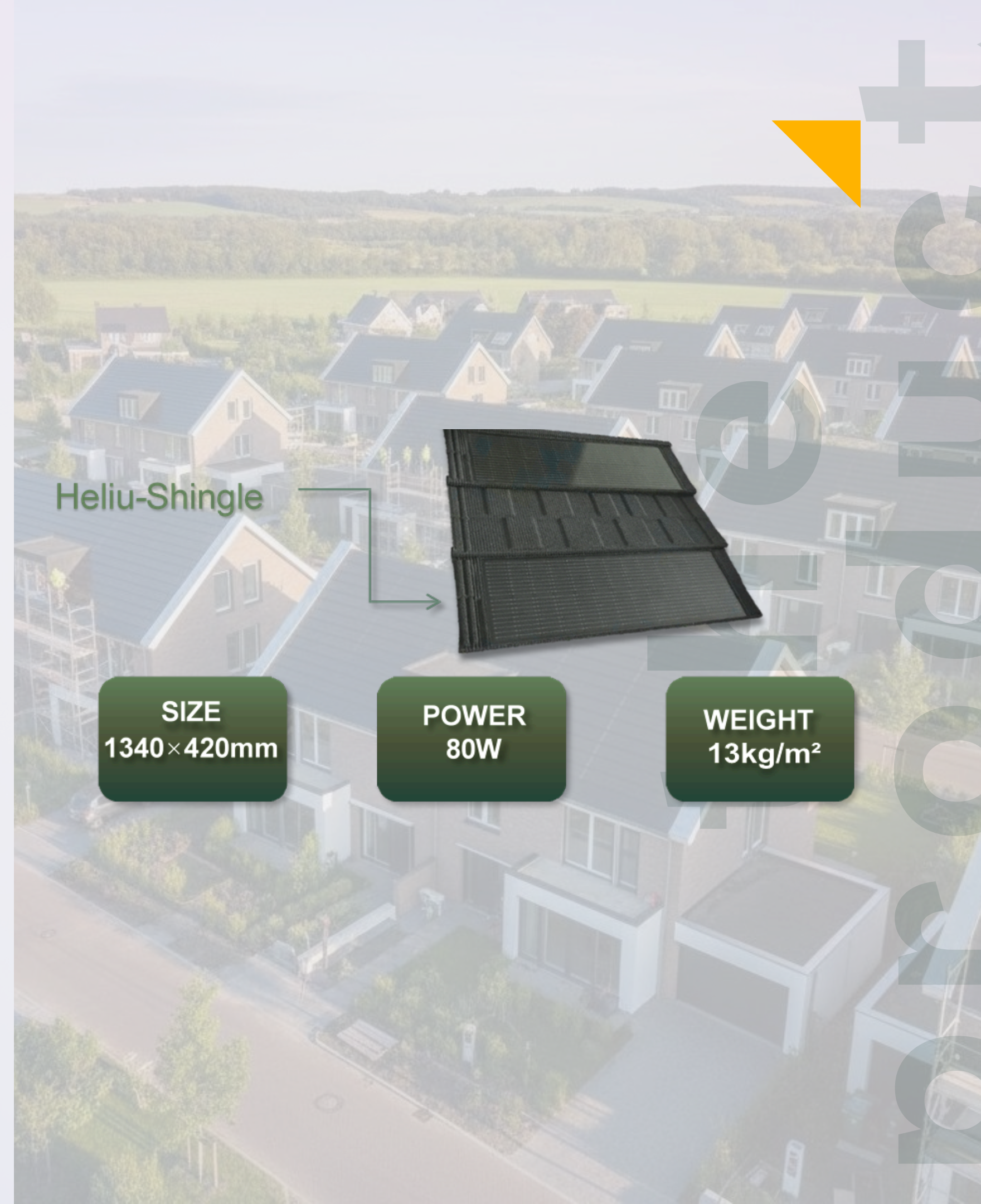
We live in a time where power should be everywhere — empowering homes, saving time, reducing cost, and supporting a better way of living.

TES's game-changing Dual-Market Strategy fuses real estate with energy, tackling Zimbabwe's structural liability head-on. We convert high-value property from a 'stranded, grid-dependent asset' into a resilient, profit-generating platform, unlocking economic value.

The Product

The Heliu Solar Tile is the pinnacle of Building-Integrated Photovoltaics (BIPV), rejecting the outdated, bulky "add-on" solar model. It fully replaces standard roofing for superior aesthetics and property value, serving as both a robust roof and a high-efficiency collector.

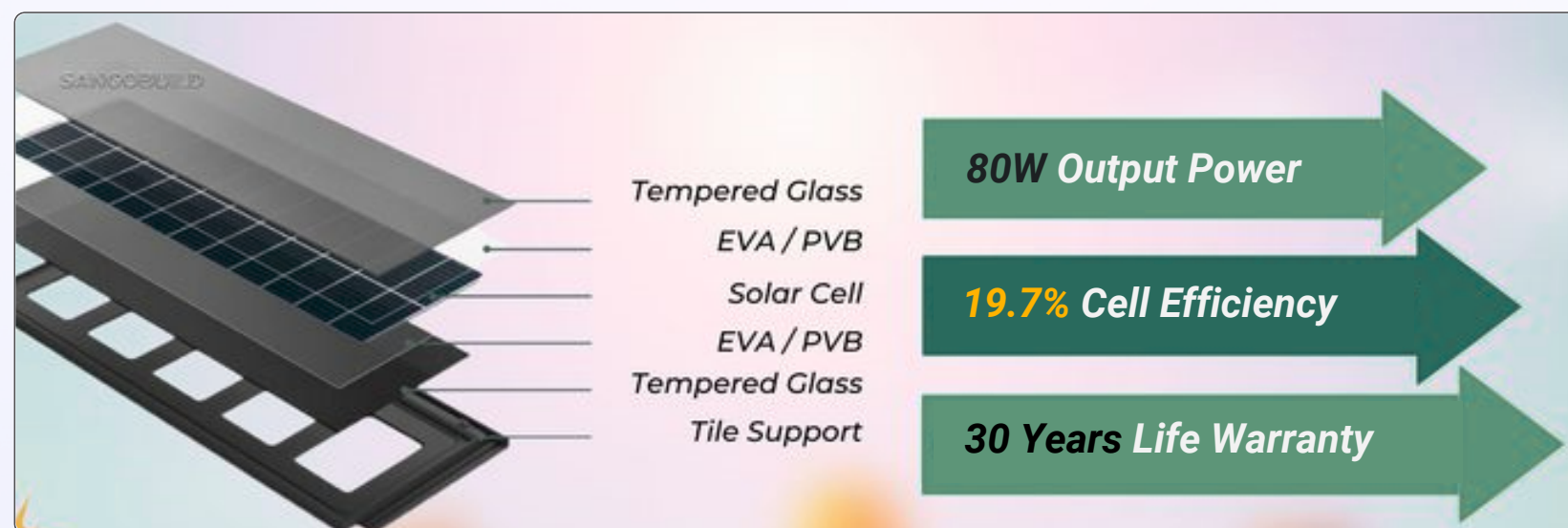
Rated at 80W per tile, the product is built for durability with a 30-year warranty. This core asset ensures lasting integrity and superior power output from one seamless, integrated investment.



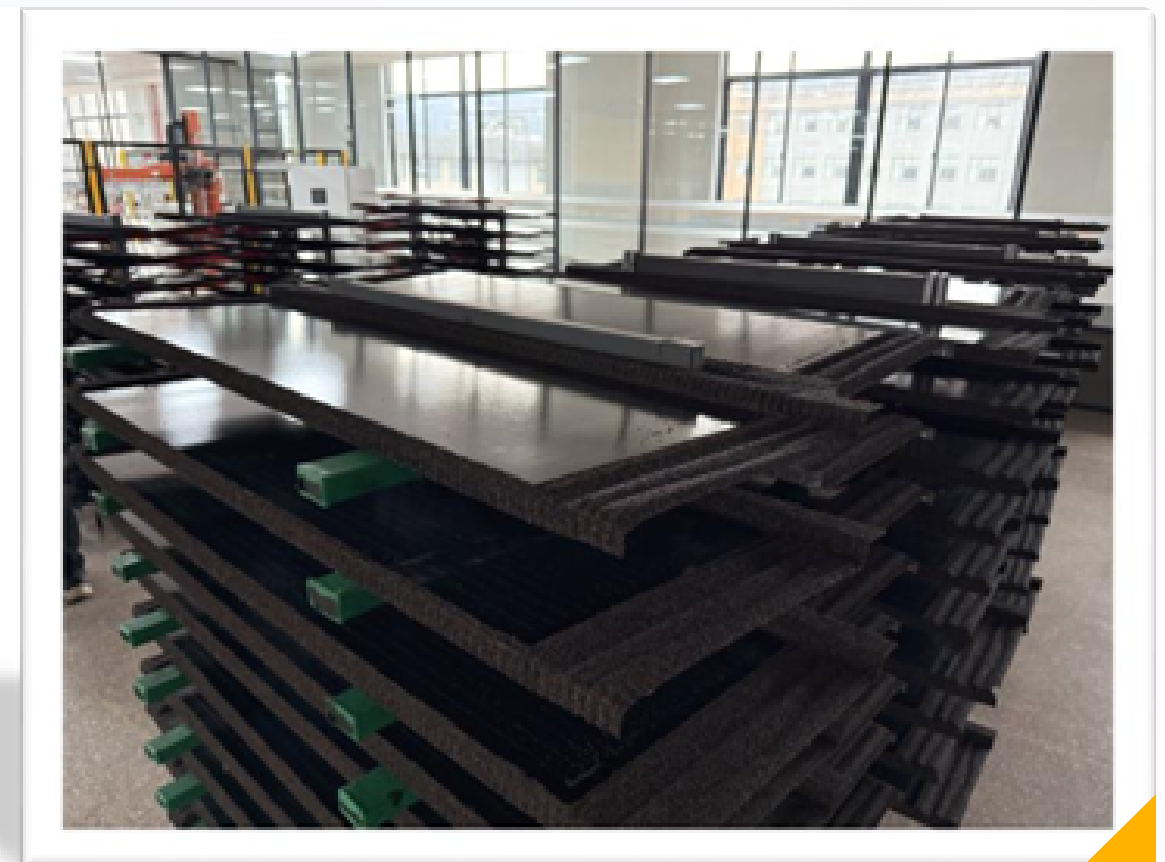


Our design philosophy is defined by Seamless Integration and Guaranteed Resilience.

- **Integrated Aesthetics:** We reject the bulky "add-on" model. The Heliu BIPV Tile replaces traditional roofing, functioning as a premium, architectural element that enhances property valuation and market desirability.
- **Asset Dualism:** Our product is a single, permanent asset that serves two functions: a robust, weather-resistant roof and a high-efficiency power generator.
- **Guaranteed Sovereignty:** We pair the Heliu BIPV tiles with Vertical Axis Wind Turbines (VAWT) to create a hybrid system, ensuring 24/7 energy sovereignty that eliminates reliance on the grid and overcomes the fundamental weakness of solar-only setups.



Design Ethos



Use Cases

ROOTED IN LOCAL EXPERTISE, BACKED BY GLOBAL STANDARDS





Market Position

TES is positioned as a Clean-Tech Infrastructure Partner, capturing value by solving Zimbabwe's most critical economic constraint—energy certainty.

- **Structural Value Proposition:** We are not a solar vendor; we are a solution to the national structural liability created by load shedding and the associated valuation gap in real estate.
- **Dual-Market Mastery:** We convert high-value real estate from a "stranded, grid-dependent asset" into a resilient, profit-generating power ecosystem.
- **Premium Target:** Our focus is exclusively on high-volume developers (e.g., Zim Cyber City) and Diaspora investors who require and pay a premium for guaranteed supply security and verifiable asset monetization (Net Metering, Carbon Credits).



Our Team

TES executes a high-velocity, lean-integrated model, fusing agile leadership with institutional-grade oversight. Our governance architecture is specifically engineered for aggressive scalability, de-risking complex financial and supply chain cycles through elite technical alliances and a formalized board of directors.

A. K Mukwasha

Technical Engineer

Oversees all system design and installation, guaranteeing adherence to international performance and safety standards.



T.D Kasosera

Founder & CEO.

Architect of TES's market strategy and exclusive manufacturer partnerships. Drives the vision to redefine energy independence in Zimbabwe.



M.T Chivandarikwa

Chief Financial Advisor

Provides strategic financial architecture and capital planning, supporting projects like the Zim Cyber City development.



A. Makaure

Lead Developer (NED)

Leads high-value developer partnerships and secures large-scale project pipelines for integrated community solutions.



Z. A. Masuka

Principal Financial Systems & Compliance Officer

CA Trainee; Expertise in Tax/Audit/IFRS; Designs financial systems and compliance architecture.



Our Invitation

Let's Build a Greener, More Resilient Zimbabwe

The future of Zimbabwe's built environment is about to be written. The narrative will be defined by the homes and communities that choose to be independent, sustainable, and forward-thinking.

This is our mission, and we are looking for partners—from developers and architects to homeowners—who share our vision.

Join us as we turn rooftops into powerhouses and redefine what it means to build for tomorrow.



Get in touch with us



+263-716-018-430

www.tes.co.zw

tesroof@gmail.com

